

## Certificate of Analysis

### R-PHYCOERYTHRIN (PE)-CONJUGATED MOUSE MONOCLONAL ANTIBODY AGAINST HUMAN INTERFERON ALPHA/BETA RECEPTOR 1

**Catalog No:** 21370-3

**Lot No:**

**Expiration:**

**Volume:** 1 ml

**Description:** Mouse Anti-Human Interferon Alpha/Beta Receptor 1, labeled with PE

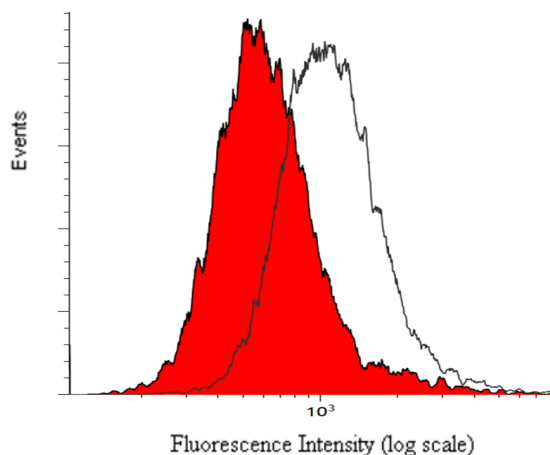
**Clone:** MMHAR-3

**Buffer:** phosphate-buffered saline (PBS) containing 1.5% BSA and 0.01% Kathon as a preservative, pH 7.4

**Antigen:** Human Interferon Alpha/Beta Receptor 1

**Isotype:** IgG<sub>1</sub>

**Tested Application:** Flow Cytometry:  $\mu$ l of antibody is sufficient for labeling of  $1 \times 10^6$  cells in 100  $\mu$ l total volume of KG-1 cells. It is recommended that each investigator optimize to determine appropriate dilutions for other cell lines and individual applications.



**Figure 1:** Flow cytometry analysis of KG-1 cells showed expression of Human Interferon Alpha/Beta Receptor 1. Isotype control (shaded histogram) and human interferon alpha/beta receptor (un-shaded histogram)

**Shipping Conditions:** Wet Ice

**Physical State of Product During Shipping:** Liquid

**Storage Conditions/Comments:** Store at 2-8°C, DO NOT FREEZE. Photo-sensitive material protect from prolonged exposure to light. Approximate concentration: 50ug/ml. For more information on protein handling, visit our Resource Library at [www.pbl assaysci.com](http://www.pbl assaysci.com).

### Authorization

Released by: \_\_\_\_\_

Date:

Sold under license from Pestka Biomedical Laboratories, Inc. d/b/a PBL Assay Science. For research use only. Not for diagnostic or clinical use in, or administration to, humans. Not for resale in original or any modified form, including inclusion in a kit, for any purpose. Not for use in the preparation of any commercial product.