

Certificate of Analysis

PE Conjugated Anti-Human Interferon Alpha/Beta Receptor Chain 2, Clone MMHAR-2 (MAb)

Catalog No: 21385-3

Lot No:

Expiration: 2.5 years from date of manufacturing of new stock (input actual date)

Size: 50 tests/vial

Description: R-Phycoerythrin (PE) Conjugated Mouse Monoclonal Antibody against Human Interferon Alpha/Beta R2

Clone: MMHAR-2

Volume: 1 ml

Buffer: Phosphate buffered saline (PBS) containing 1.5% bovine serum albumin (BSA) and 0.1% Kathon, pH 7.4

Antigen: Human interferon alpha/beta receptor chain 2

Isotype: IgG_{2a}

Tested Applications: Flow Cytometry: 20 µl is sufficient for labeling of 1×10^6 cells in 100 µl total volume

It is recommended that each investigator determine appropriate dilutions for individual use.

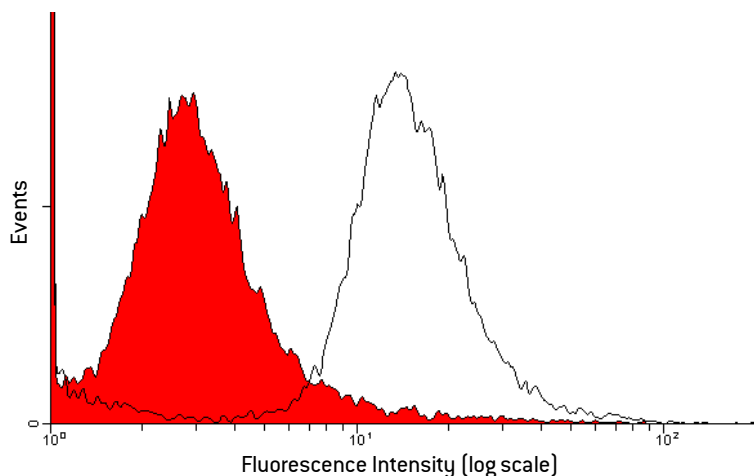


Figure 1. Flow cytometry analysis of KG-1 cells showed expression of Human Interferon Alpha/Beta Receptor Chain 2. Isotype control (shaded histogram) and human interferon alpha receptor (un-shaded histogram).

Shipping Conditions: Wet Ice

Physical State of Product During Shipping: Liquid

Storage Conditions/Comments: Photo-sensitive material; protect from prolonged exposure to light. Store at 2-8°C. **DO NOT FREEZE.** Approximate concentration: ug/ml. For more information on protein handling, visit our Resource Library at www.pblassaysci.com.

Authorization

Released by: _____

Date:

Sold under license from Pestka Biomedical Laboratories, Inc. d/b/a PBL Assay Science. For research use only. Not for diagnostic or clinical use in, or administration to, humans. Not for resale in original or any modified form, including inclusion in a kit, for any purpose. Not for use in the preparation of any commercial product.

Rev. 04