

## Certificate of Analysis

### FITC Conjugated Anti-Human Interferon Alpha, Clone MMHA-11 (MAb)

**Catalog No:** 21112-3

**Lot No:**

**Expiration:** 2.5 years from date of manufacturing of new stock (input actual date)

**Size:** 25 µg/vial

**Description:** Fluorescein Isothiocyanate (FITC) Conjugated Mouse Monoclonal Antibody against Human Interferon Alpha

**Clone:** MMHA-11

**Volume:** 0.5 ml

**Antibody Concentration:** 0.05 mg/ml

**F/P Ratio:**

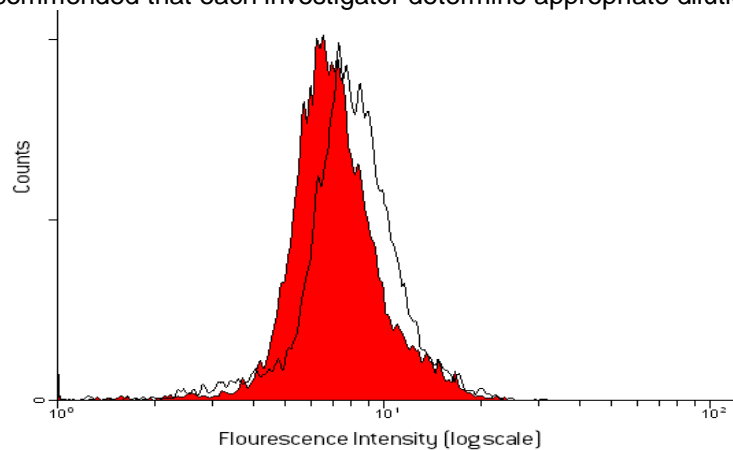
**Buffer:** Phosphate-buffered saline (PBS) containing 1% BSA and 0.05% Kathon, pH 7.2

**Antigen:** Human Leukocyte Interferon

**Isotype:** Mouse IgG<sub>1</sub>

**Tested Applications:** *Flow Cytometry:* µg/ml of antibody is sufficient for labeling of  $1 \times 10^6$  cells in 100 µl total volume of KG-1 (human myeloblast cell line). It is recommended that each investigator determine appropriate dilutions for other cell lines.

*Immunocytochemistry:* It is recommended that each investigator determine appropriate dilutions for individual use.



**Figure 1.** Log Fluorescence Intensity-FITC Human IFN Alpha. Expression of endogenous Human Interferon Alpha in KG-1 human myeloblast cell line. Flow cytometry analysis on non-induced cells (closed histogram) and induced cells (open histogram).

**Shipping Conditions:** Wet Ice

**Physical State of Product During Shipping:** Liquid

**Storage Conditions/Comments:** Photo-sensitive material; protect from prolonged exposure to light. Store at 2-8°C. **DO NOT FREEZE.** For more information on protein handling, visit our Resource Library at [www.pbl assaysci.com](http://www.pbl assaysci.com).

### Authorization

Released by: \_\_\_\_\_

Date: \_\_\_\_\_

Sold under license from Pestka Biomedical Laboratories, Inc. d/b/a PBL Assay Science. For research use only. Not for diagnostic or clinical use in, or administration to, humans. Not for resale in original or any modified form, including inclusion in a kit, for any purpose. Not for use in the preparation of any commercial product.

Rev. 05