

Certificate of Analysis

Anti-Human Interferon Beta, Clone MMHB-12 (MAb)

Catalog No: 21450-1

Lot No:

Size: 50 µg/vial

Description: Mouse Monoclonal Antibody against Human Interferon Beta

Clone: MMHB-12

Volume: ml

Concentration: mg/ml

Buffer: Phosphate buffered saline (PBS) containing 0.1% bovine serum albumin (BSA)

Antigen: Human Interferon Beta

Isotype: IgG₁

Bioactivity: Binds to human interferon beta with high affinity

Tested Applications: Direct Binding ELISA

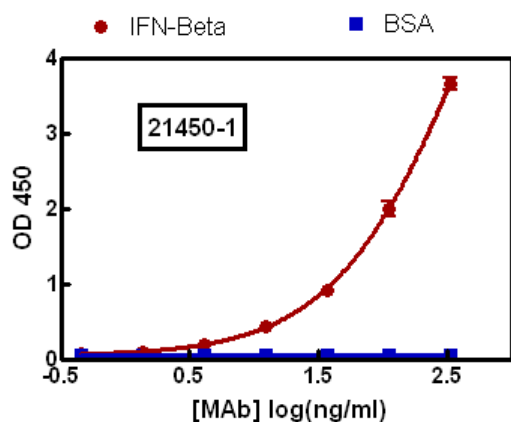


Figure 1. Representative binding curve of antibody to mammalian expressed human interferon beta 1a (circle) and to 0.1% BSA/PBS (square) in a Direct Binding ELISA. Medium-binding polystyrene plates were coated with either 1 µg/ml human interferon beta 1a or 0.1% BSA/PBS. Thereafter, titrations of the product were added to the wells. Donkey anti-mouse IgG conjugated to HRP was used as the detection antibody. Colorimetric detection was performed using 3, 3', 5, 5'-Tetramethylbenzidine (TMB) substrate. The HRP-TMB reaction was stopped using a diluted H₂SO₄/HCl solution.

Note: Due to the variation in ND₅₀ values based on cell type and assay systems, we recommend each user to determine the neutralizing concentration of this lot in their assay system. In an A549/EMCV (cell/virus) assay system, the antibody does not neutralize the cytopathic inhibitory effect of human interferon beta 1a, mammalian.

PBL has not tested the use of this product in western blot, flow cytometry, immunoprecipitation or immunohistochemistry.

Shipping Conditions: Dry Ice

Physical State of Product During Shipping: Frozen

Storage Conditions/Comments: After receipt, the product may be stored at -20°C for short-term use (6 months). For long-term storage, we recommend storing the product at -70°C or below for retention of full activity. When thawing, the contents of the tube should be apportioned in separate tubes so that freezing and thawing is kept to a minimum. Refreezing should be done on dry ice or in a dry ice/alcohol bath. Further dilution of the product should be in buffers containing protein such as 0.1% bovine serum albumin (BSA). For more information on protein handling, visit our Resource Library at www.pblassaysci.com.



pbl assay science

131 Ethel Road West, Suite 6 | Piscataway, NJ 08854 USA | T:+1.732.777.9123 | F:+1.732.777.9141 | E: info@pbl assaysci.com | W: pbl assaysci.com

Authorization

Released by: _____

Date:

Sold under license from Pestka Biomedical Laboratories, Inc. d/b/a PBL Assay Science. For research use only. Not for diagnostic or clinical use in, or administration to, humans. Not for resale in original or any modified form, including inclusion in a kit, for any purpose. Not for use in the preparation of any commercial product.

Rev. 03

A decorative graphic at the bottom of the page consisting of a wavy, horizontal band with a color gradient from light green on the left to bright blue on the right.