



Human IFN Alpha **All Subtype** ELISA Kit, High Sensitivity

for Serum, EDTA Plasma & Tissue Culture Media (TCM)

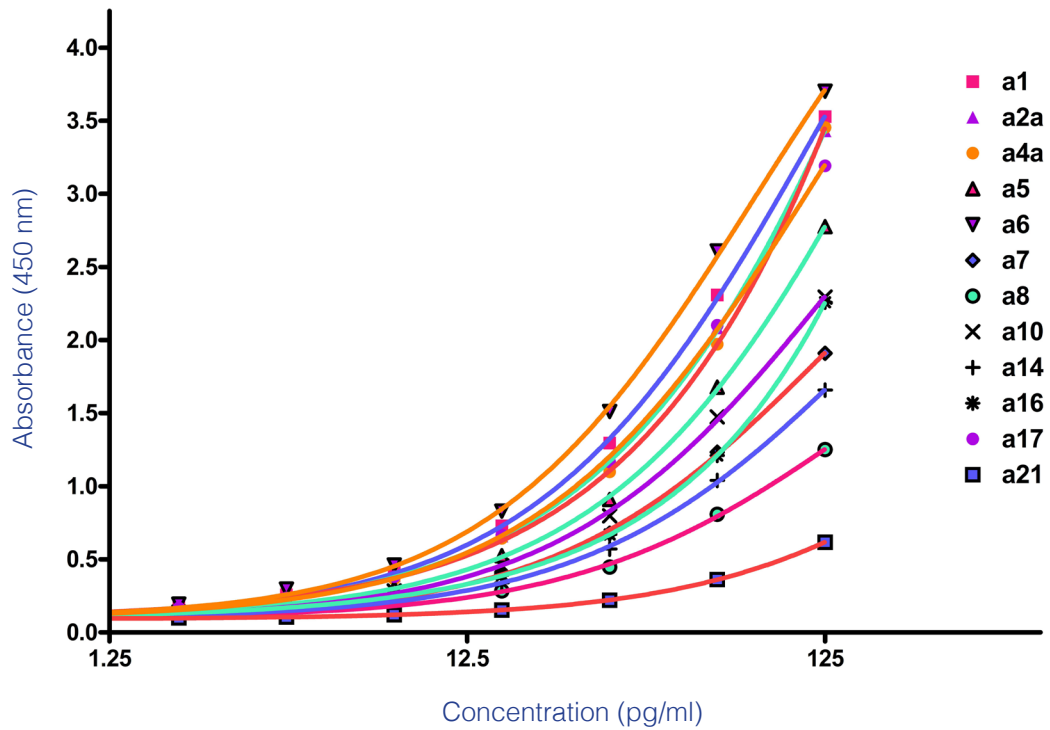
- Low picogram range detection of **ALL** human IFN- α subtypes
- Optimized for **human autoimmune serum** and EDTA plasma samples
- Assay standard range of **1.95 - 125 pg/ml** in serum, plasma & TCM
- Reproducible results with < 10% inter- and < 8% intra-assay CVs

PBL's VeriKine-HS Human Interferon Alpha All Subtype ELISA (Catalog No. 41115) equips you with a consistent, high sensitivity tool for accurately detecting **ALL** human IFN- α subtypes. Featuring **robust matrix tolerance**, including disease sera, normal serum, EDTA plasma and TCM, this immunoassay provides global IFN measurement and high data reproducibility. With purified, recombinant human IFN-2 α provided as the standard, this kit is the **most sensitive ELISA** on the market for human IFN alpha detection.

Figure 1. LLOQ and LLOD in Normal Human Serum (NHS)

Subtype	LLOQ	LLOD
α 1 (α D)	2.31	0.76
α 2a (α A)	1.36	0.42
α 4a (α M1)	1.38	0.43
α 5 (α G)	1.70	0.51
α 6 (α K)	1.13	0.33
α 7 (α J1)	2.09	0.59
α 8 (α B2)	2.81	0.82
α 10 (α C)	1.77	0.65
α 14 (α H)	1.76	0.51
α 16 (α WA)	2.01	0.68
α 17 (α I)	1.36	0.50
α 21 (α F)	6.18	1.67

Figure 2. IFN- α Subtype Standard Curves in Normal Human Serum (NHS)



Product Information

Product No.	41115
Description	Human IFN Alpha All Subtype ELISA, High Sensitivity
Size	1 x 96-well plate (41115-1)
Compatibility	Serum, EDTA Plasma, Tissue Culture Media (TCM)
Assay Range	1.95 - 125 pg/ml
Specificity	Cross-reacts with cynomolgus/rhesus IFN- α

No cross-reactivity detected with:

- Human IFN- β , γ , ω
- Mouse IFN- α , β , γ
- Rat IFN- α , β , γ
- Bovine IFN- τ

Visit our website for more information:

<https://www.pblassaysci.com/assay-kits/human-ifn-alpha-all-subtype-elisa-kit-high-sensitivity-serum-edta-plasma-tcm-41115>