

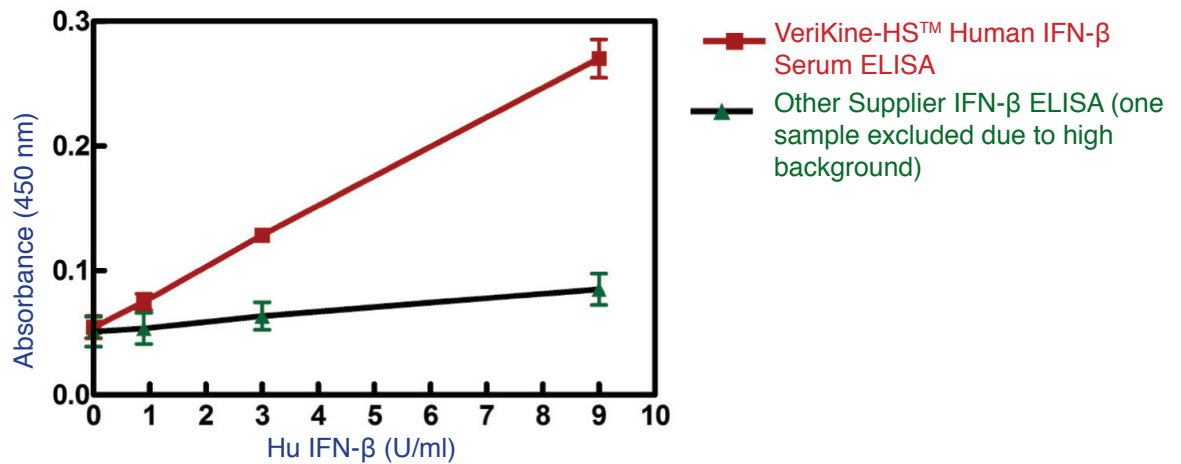


VeriKine-HS™ Human Interferon Beta Serum ELISA

Catalog No. 41415

- Allows accurate Human IFN- β measurement to as low as 1.2 pg/ml in human serum, plasma, autoimmune disease sera or cell culture media
- Provides high precision assay reproducibility with <8% inter- and intra-assay CV
- Suitable for measurement of trademarked therapeutic molecules such as Rebif®, Avonex®, Betaseron® and Extavia® in human serum samples*

Fig 1. Dose Response in Normal Human Serum Spiked with 0, 1, 3 & 10 U/ml IFN- β



The VeriKine-HS™ Human Interferon Beta Serum ELISA has been developed to measure low or basal levels of human IFN- β in serum, plasma or tissue culture media samples. This assay is also suitable for measurement of trademarked IFN- β therapeutic compounds in human serum.* Researchers and clinical investigators examining a) the pharmacokinetics of IFN- β molecules, b) IFN- β as a biomarker, or c) IFN- β as a pharmacodynamic marker of TLR agent or other immune response modifier activity will find this highly sensitive and specific assay to be an essential laboratory tool.

* Human IFN- β compounds validation performed independently by PharmaNet/i3. Data presented at 2012 AAPS annual meeting.

Interferon beta (IFN- β) has long been known to function as an inhibitor of viral replication as part of body's innate antiviral response. It is also widely used as a treatment for Multiple Sclerosis (MS) patients, either as a single agent or as part of a combinatorial approach. With the resurgence of interest in antitumor immunity as a promising treatment approach for several types of cancers, there has been renewed focus on applying IFN- β as a therapy due to the anti-tumor and immunomodulatory properties of the protein. In addition, ligation of Toll-Like Receptors (TLRs) leads to IFN- β production and, as novel TLR agonists and antagonists are being developed as therapeutics for several diseases, it may be useful to monitor IFN- β level as a downstream readout for compound effectiveness.

Figure 2. Correlation between ELISA Standard Curves prepared in Standard Diluent and Normal Human Serum

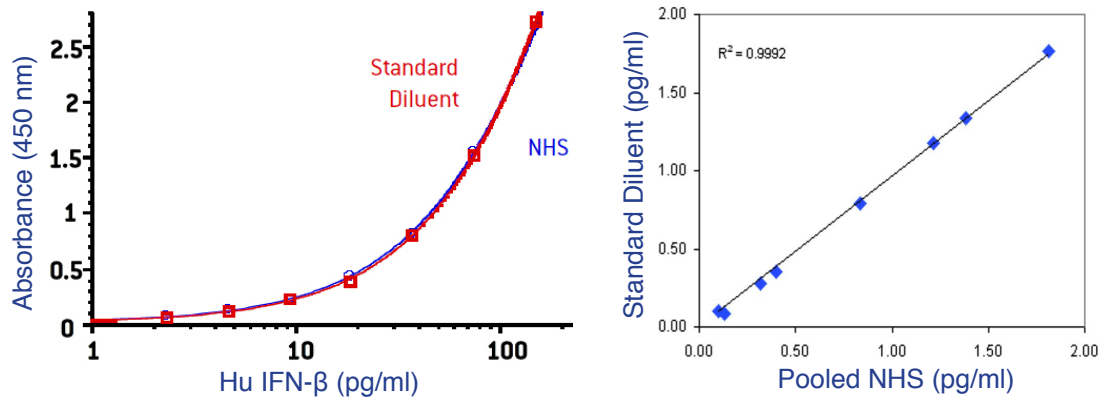
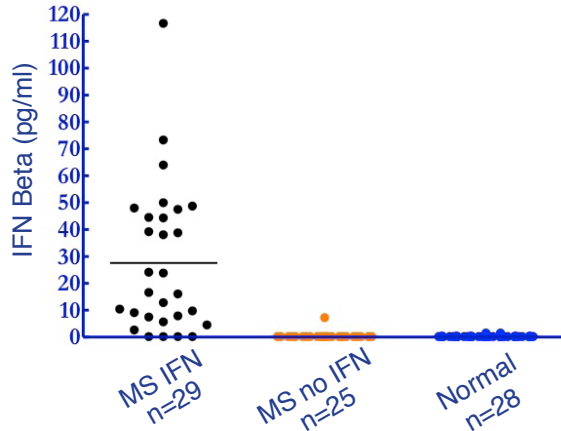


Figure 3. IFN Beta in Normal and MS Patient Sera Detected by ELISA kit 41415



Product Information

Catalog Number	41415-1
Description	VeriKine-HS™ Human Interferon Beta Serum ELISA
Size	1 x 96-well plate
Compatibility	Human Serum, Plasma, Cell Culture Media
Assay Range	1.2 - 150 pg/ml



For more information on this product, visit our website.